

In this factfile:

- College facilities
- Local map
- Key staff
- Courses available
- Sample activities
- Nationality statistics
- Student survey results
- Typical excursions
- Accommodation options



Kings Bournemouth

Choose Kings Bournemouth

- 1 Often voted the best beach in the UK
- 2 University city with relaxed lifestyle
- 3 City centre campus with residence





Braidley Road campus

People you'll meet



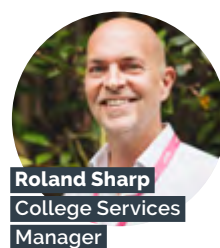
Andrew Short
Principal



Nicola Cranshaw
Director of Studies



Belen Sullivan
Homestay Manager



Roland Sharp
College Services
Manager



Helen Steel
Welfare Coordinator
and DSL



Welcome to Kings Bournemouth Braidley Road

Kings Bournemouth's Braidley Road campus is located in an attractive residential area, close to the city centre. Consisting of two large buildings, it is the main teaching and administration centre, and is surrounded by gardens with lawns and patios. Facilities at the campus are fantastic, with spacious, well-equipped classrooms, two computer learning centres, a leisure/activity hall and a cafeteria and restaurant. Outside, there is a dedicated on-site sports court.

College address and contact number

Kings Bournemouth
58 Braidley Road
Bournemouth
Dorset, BH2 6LD

T +44 (0)1202 293535

F +44 (0)1202 293922

College facilities

Well-equipped classrooms, most with interactive whiteboards

Two Computer Learning Centres

Leisure/activity hall

Library

On-site outdoor sports court

Three outside table tennis tables

Restaurant and cafeteria

Science lab

Art studio

Watch the Kings Bournemouth video

Visit kingshub.online/colleges-bournemouth

or follow this QR code



Location factfile: Kings Bournemouth



Many classrooms at Braidley Road have been recently renovated



The Hall is a great space for lots of different events



The library at Braidley Road



51 Braidley Road, the second campus building, across the street from 58 Braidley Road



The large sports court within the grounds of 58 Braidley Road



Versatile space above the cafeteria used for teaching or activities



The top floor of our Braidley Road campus has been renovated in a contemporary style



The lively student cafeteria with great hot and cold food served fresh every day

GCSE

3 term GCSE:

Entry from: Aged 15, IELTS 5.0*

Starts: September

4 – 7 terms GCSE:

Entry from: Aged 14, IELTS 4.0*

Starts: September, January, April or June

Two-year GCSE:

Entry from: Aged 15, IELTS 5.0*

Starts: September, January

A-levels

Entry from: Aged 16, IELTS 5.5*

Starts: September or January

Extended A-level

Entry from: Aged 15, IELTS 4.0*

Starts: September, January, April, June

Advanced Level Foundation

Entry from: Aged 17, IELTS 5.5*

Starts: September or January

Extended Foundation

Entry from: Aged 16, IELTS 4.5*

Starts: September, January, April, June

International High School Programme

Entry from: Aged 14, IELTS* or

Junior English Test

Starts: September 2022 onwards

University of Bristol pathway

Entry from: Aged 17, IELTS 5.5*

Starts: September, January

Science and Engineering Foundation

Entry from: Aged 17, IELTS 5.0*

Starts: September, January

Medical Foundation

Entry from: Aged 17, IELTS 6.5*

Starts: September, January

English Preparation

Entry from: Aged 15, IELTS 3.5 – 5.0*

Starts: January, April, July and September

IELTS Preparation

Entry from: Aged 16, IELTS 4.0*

Starts: Various, see factsheet

Academic Study Programme

Entry from: Aged 17, IELTS 4.5*

Starts: September, January

* Or equivalent



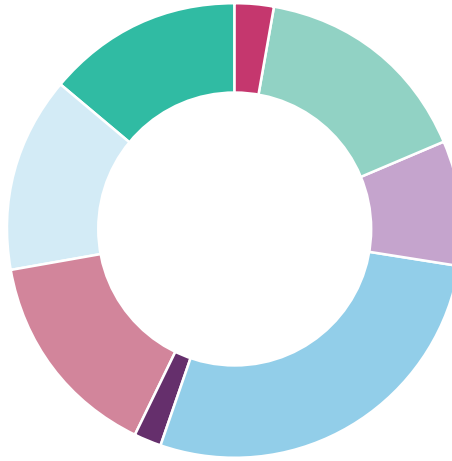
Sample Social activities

- Watersports
- Altitude — high and low ropes courses
- Table tennis
- Cinema trips and movie nights
- Boat trips
- Dance class
- Basketball
- Mountain biking in the New Forest
- Volleyball
- Snowtrax — skiing and snowboarding

Sample Clubs and Societies

- Student Council
- Yoga/Pilates Club
- Basketball Club
- Watersports
- Textiles Club
- Chess Club
- Martial Arts Club
- Astronomy Club
- Football Club
- Badminton Club
- Beach volleyball
- Premier League football at AFC Bournemouth

Nationality statistics

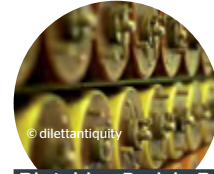


- China 3%
- Eastern Europe, Turkey and CIS 16%
- Latin America & Brazil 9%
- Middle East, North Africa and Iran 28%
- North Asia 2%
- South East Asia 15%
- South Europe 14%
- Western Europe 14% (UK 10%)

Nationality Statistics 2020 – 2021

Sample enrichment

- Bletchley Park visit



Bletchley Park in Buckinghamshire was once the top-secret home of the World War II Codebreakers. Ciphers and codes of several Axis countries were decrypted here, including those generated by the German Enigma and Lorenz machines.

- BMW factory visit



The BMW Factory tour is popular with our students as it allows them to see how MINIs are made in the Oxford-based plant. The guided tour focuses on the vast assembly hall and the processes that take place within it.

- Biology field trip
- Google Science Fair
- Visit to World Travel Market in London

Sample activities calendar (click image or follow QR in bottom right corner to view current activities calendar)

Sunday	Monday	Tuesday	Wednesday	Thursday	Friday	Saturday
Relax and enjoy the Weekend!	Academic Enrichment options this term include: Drama and Book Club, Running Club, Table Tennis, Basketball, Photography Club, Debate Club, Mindfulness, and IELTS/Conversation Clubs		Happy birthday to anyone who is celebrating their's this month!	Please feel free to ask at reception for more information or any queries about the activities listed here.	Tennis with Max Meet at reception at 1pm Cost: Free	Train to London Shop around London and visit the London eye!
Relax and enjoy the Weekend!	Catch a movie @ Odeon, 12-14 Leisure, Half-price on Mondays	Football @ Littledown 4:45 - 5:45pm with Max	Academic Enrichment 2:30-3:50pm Choose your option EFL Conversation Club 3:00pm Room 210	Go for a picnic in the park	Mini-Golf with Max Meet at reception at 1pm Cost: £10	Train to Portsmouth Take a visit to the Spinnaker Tower
Relax and enjoy the Weekend!	Catch-up on homework and revision!	Football @ Littledown 4:45 - 5:45pm with Max	Academic Enrichment 2:30-3:50pm Choose your option EFL Conversation Club 3:00pm Room 210	Go for a bike ride along the sea front	Basketball 4:45 - 5:45pm at sports courts with Max	Travel to Brighton Take a Visit to Brighton pier
Relax and enjoy the Weekend!	Catch-up on homework and revision!	Football @ Littledown 4:45 - 5:45pm with Max	Academic Enrichment 2:30-3:50pm Choose your option EFL Conversation Club 3:00pm Room 210	Go and have a kickabout at littledown	Cinema with Max Meet at reception at 1pm Cost: £10	Travel to Southampton Visit West Quay shopping Centre Today!
Relax and enjoy the Weekend!	Go Shopping in Bournemouth Town Centre	Football @ Littledown 4:45 - 5:45pm with Max	Academic Enrichment 2:30-3:50pm Choose your option EFL Conversation Club 3:00pm Room 210	Head to Bournemouth Beach with friends	Bowling with Max Meet at reception at 1pm Cost: £10	Visit Cornwall Visit Cornwall the lovely



Out and about in Bournemouth

Area surrounding Braidley Road

Meyrick Park is a five minute walk from the College, and within it there is:

a health centre

a tennis court

a golf course

two large rugby/football fields

Distances to important landmarks

City Centre and Bournemouth
10 min walk, 10 min bus (from Braidley Road); 2 min walk (from St. Peters Quarter)

Beach
20 min walk, 15 min bus (from Braidley Road), 5 min walk (from St. Peters Quarter)

Train station
15 min walk, 10 min bus

New Forest
30 min train

London
2 hr train, 2.5 hr coach

Winchester
40 min train, 1 hr bus

Typical excursions

Poole Harbour

Brownsea Island (Summer only)

Salisbury and Stonehenge

Portsmouth

Bath

Oxford, Windsor and Eton*

Harry Potter Studios*

Christchurch

Swanage and Corfe Castle

Winchester and the New Forest

Brighton

London Theatre trips*

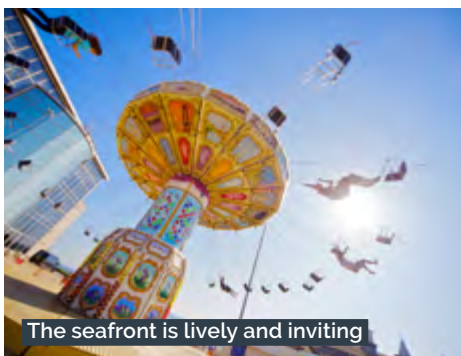
*These excursions are offered via external excursion companies



Bournemouth has one of the UK's best sandy beaches



Location factfile: Kings Bournemouth



The seafront is lively and inviting



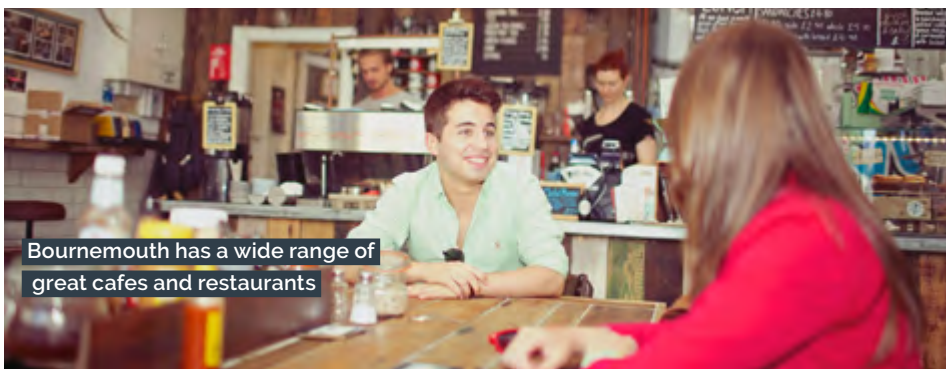
Walking and cycling are popular ways to get about



Bournemouth has plenty of parks and green spaces



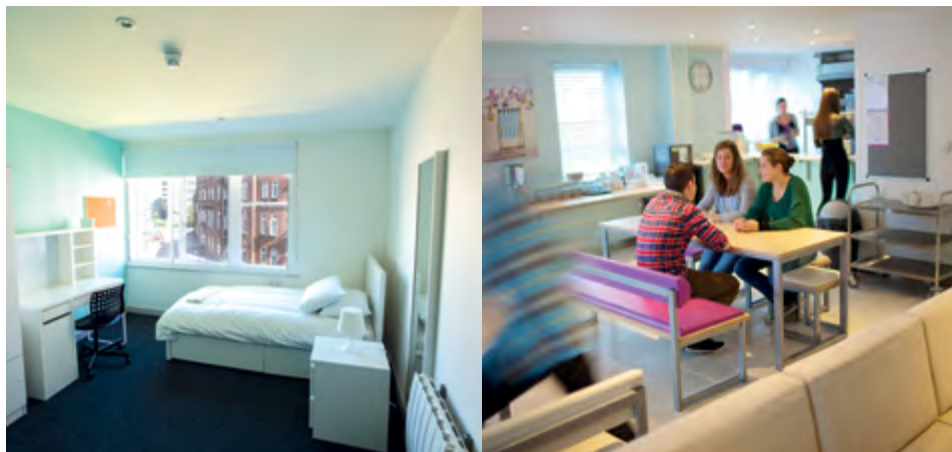
The perfect city for watersports



Bournemouth has a wide range of great cafes and restaurants

Accommodation

Location factfile: Kings Bournemouth



Student Residences

In Bournemouth, there are four comfortable and attractive residences to choose from.

For students aged between 14 – 18, **Charminster residence** is also half board, providing both breakfast and dinner. The residence is located in a residential area just a 5 minute walk from a variety of shops and restaurants and a 25 minute walk to Kings' Campuses.

For students aged 18 and over, they can choose an option of half board or self catering. Our residences are called **St. Peters Residence** and **Town Centre**. They are both located in a central position in Bournemouth Centre and are a short 10 minute walk from Kings campuses.

We offer a range of single, twin and studio rooms and all feature private bathrooms.

Homestay

Our many homestays are located around Bournemouth town centre and the surrounding residential areas. We offer a wide range of family homes with a choice of single and twin rooms. There are also a number of executive families on offer. The majority of our homestay providers have been hosting Kings students for many years.

Download all Bournemouth accommodation factsheets here

Visit kingshub.online/colleges-bournemouth or follow this QR code

