

# ATLAS LANGUAGE SCHOOL

IRELAND | UK | MALTA

# ACELS

Marketing English in  
Ireland

EDUCATION  
IN IRELAND  
WORLD CLASS STANDARDS  
WARMEST OF WELCOMES

CAMBRIDGE ENGLISH  
Language Assessment  
Authorised Centre

ALTO Association of  
Language Travel  
Organisations

AMERIKANT UND EMPFOHLEN VON  
BILDUNGS  
URLAUB  
bildungsausschuss-sprachen.de

TRINITY  
COLLEGE LONDON

elt council



## CONTENTS

- 01 A Life and Learning Experience
- 03 Your Academic Journey
  - Our Academic Methodology
  - Your Academic Timetable
  - Free Elective Classes
  - Study Club / Tutorials / Level Progression
- 07 Making Yourself at Home
- 11 Your Support Team
- 13 Outside the Classroom
- 17 Atlas Dublin
- 21 Atlas Malta
- 25 Choose Your Course
- 27 General & Intensive English
- 29 Exam Preparation
- 31 Academic Year Programmes
- 32 Erasmus Plus Teacher Training
- 33 University Pre-Foundation
- 34 Study and Internship
- 35 Atlas Junior
- 39 High School Placement
- 43 Testimonials

# A LIFE AND LEARNING EXPERIENCE

At Atlas our mission is to make every day of your language travel programme an unforgettable life and learning experience. We are dedicated to providing an innovative and challenging learning environment to give you the tools to succeed in the modern world.

We promise to help you better understand how you learn most effectively so you can make the best choices on how to improve your English skills quickly. We'll teach you the skills and learning strategies you need to flourish inside and outside the classroom and reach your potential in today's world.

Whether you are studying with us for a week, a month or a year our goal is to provide you with a learning environment where you can quickly improve your English, grow in confidence and develop personally.

We look forward to welcoming you to Atlas!



# YOUR ACADEMIC JOURNEY

We are committed to delivering engaging and motivating language courses in the best possible environment for you to improve your English skills as quickly as possible. We are continuously working to improve the teaching and academic supports that we offer all our learners.

## Inside and outside the classroom Atlas offers:

- an experienced team of teachers who are committed to helping you express yourself and engage in everyday conversation more confidently and fluently.
- lessons with a range of activity types that focus on real-world tasks and communicative skills.
- weekly whole class and individual progress tutorials on demand that address your specific needs.
- an assessment system that allows you to focus on measuring and achieving progress.
- supplementary classes and additional support sessions that encourage you to develop good learning habits and extend your learning beyond the classroom.



**Gary Tennant**  
Head of Academics

## OUR ACADEMIC METHODOLOGY

### CLEAR LEARNING TARGETS

Your lessons will include clear, concise learning outcomes that provide you with a 'road map' for progress and success. At the end of each week you will have a chance to assess and evaluate what you have achieved and set new class goals for the following week.

### COMMUNICATIVE

Our lessons focus on language patterns and forms, and are also interactive. You will be working with other learners and will be challenged to think and speak about causes and effects, categories, connections, priorities and so on, to produce extended, complex sentences.

### PERSONALISED FEEDBACK

We believe that providing regular feedback is a really important part of your learning journey. Each week our teachers share their views on your success and give advice on how to improve even more quickly through our system of tutorial support. You can also make an appointment with our Learning Coordinator who can help you design an Individual Learning Plan tailored to your needs.

### ASSESSMENT AND GUIDED PROGRESS

Your performance is monitored and assessed by your teachers and the academic team to make sure you stay on target with your learning. We have regular weekly progress tests that focus on your language knowledge and your skills.

## FEATURES OF ALL OUR PROGRAMMES

### Weekly Class Objectives



Weekly Class objectives so that you are clear on your learning goals each week

### Weekly Progress Tests



Weekly Progress tests so you can assess your progress

### Study Club



Free access to Study Club sessions with senior academic staff

### Free Elective Classes



Up to 6 free additional lessons each week - see more on page 5.

## YOUR ACADEMIC TIMETABLE

Our two most popular courses at Atlas are General English Fluency (GE20), which consists of 20 lessons per week and General English Fluency Plus (GE26), which is a 26-lesson programme.

### GENERAL ENGLISH FLUENCY (GE20)

20 lessons (16 hours 40 minutes) per week

### GENERAL ENGLISH FLUENCY PLUS (GE26)

26 lessons (21 hours 40 minutes) per week

Each lesson is 50 minutes and lessons are delivered in blocks of two.

<b>Session A:</b>	<b>09.00am - 10.40am</b>
<b>Break:</b>	<b>10.40am - 11.10am</b>
<b>Session B:</b>	<b>11.10am - 12.50pm</b>

Generally Session A and Session B are taught by different teachers to give you exposure to a variety of accents and teaching styles.

Here is a sample morning timetable from Atlas Dublin showing the morning classes and some of our additional free academic support sessions such as Study Club and our Elective workshops in the afternoons.



	MONDAY	TUESDAY	WEDNESDAY	THURSDAY	FRIDAY
<b>09.00 - 10.40AM</b>	<b>GE20 MORNING A: New Students:</b> Placement Test & Induction  <b>Current Students:</b> Review & Recycle (HWK 3 review + points arising from previous week's test & feedback)	<b>GE20 MORNING A:</b> Grammar, Vocabulary and Functional Language	<b>GE20 MORNING A:</b> Grammar, Vocabulary, Functional Language + Writing Skills  <b>HWK3</b> (Writing Skills) set for Friday	<b>GE20 MORNING A:</b> Grammar, Vocabulary and Functional Language + HWK1 correction	<b>GE20 MORNING A:</b> Grammar, Vocabulary and Functional Language
<b>10.40 - 11.10AM</b>	BREAK	BREAK	BREAK	BREAK	BREAK
<b>11.10 - 12.50PM</b>	<b>GE20 MORNING B:</b> Introduce the week's objectives  Grammar, Vocabulary and Functional Language  <b>HWK1</b> (Grammar & Vocabulary) set for Tuesday	<b>GE20 MORNING B:</b> Vocabulary Building, Pronunciation and Speaking Skills Extension  <b>HWK2</b> (Grammar & Vocabulary) set for Wednesday	<b>GE20 MORNING B:</b> Vocabulary Building, Pronunciation and Speaking Skills Extension	<b>GE20 MORNING B:</b> Vocabulary Building, Pronunciation and Speaking Skills Extension  <b>HWK4</b> (Grammar & Vocabulary) set for Friday	<b>GE20 MORNING B:</b> Weekly Review & Test
<b>12.50 - 14.00PM</b>	LUNCH	LUNCH	LUNCH	LUNCH	LUNCH
<b>14.00 - 15.40PM</b>	<b>Current Students:</b> GE20/GE26 Electives	Plus Courses (GE26)	GE20/GE26 Electives	Plus Courses (GE26)	GE20/GE26 Electives
<b>15.40 - 16.30PM</b>	<b>New Students:</b> Orientation Tour				
<b>16.30 - 17.00PM</b>					



## STUDY CLUB

The Atlas Study Club is a teacher-supervised session that runs twice a week in our large library and self-study room. With the help of a senior teacher you can work individually or in small groups either reviewing key grammar and vocabulary or getting help with your homework.

You will also be encouraged to develop the learning habits and independent study skills that will help you to continue learning both outside school during your course and also when you return home.



## TUTORIALS

At the end of your first week you will have a **Week One Tutorial** with a member of the Atlas team. This is your opportunity to give us initial feedback on your classes and all other aspects of our services. We want to check early on that you are settling in and are happy!

For additional academic support you can schedule a **Progress Tutorial** with your teacher every 4-6 weeks or book an appointment with our **Learning Support Coordinator** who can help you design an Individual Learning Plan tailored to your needs.



## FREE ELECTIVE CLASSES

As part of your time at Atlas you have access to our free Elective classes. These language learning sessions have been designed to help you express yourself and engage with other students in English more confidently. Generally there are two to three electives weekly which means up to an extra six additional lessons included free each week as part of your programme!

A selection of some of our most popular electives are listed below:



### English Around the World

See and hear how English is spoken in countries such as England, the USA, Canada, Australia, and Jamaica! Learn about the history, culture and traditions of English-speaking countries.



### Conversation Skills

A great way for you to develop your speaking skills in everyday situations. Each week is structured around a themed lesson that focuses on different aspects of developing conversation.



### English through Drama

Work on various speech and drama techniques such as voice, working with texts, movement, and body language!



### Reading Club

Discuss an assigned text or graded reader with your teacher and fellow students.



### English Life and Culture

A very popular course that introduces different aspects of history and culture. Topics covered include history, literature, sport, and traditional and popular music.



### Pronunciation

Improves your ability to understand spoken English as well as your own pronunciation and confidence when speaking.



### Public Speaking

Learn strategies that will help you present and speak in public with confidence.



### Film and Fluency

Watch a film with English subtitles and enjoy some conversation about the movie before and after.



### English through Music

A fun way to improve your English by listening to popular songs and discussing the lyrics! i.

## LEVEL PROGRESSION

For evaluation we use the popular CEFR (Common European Framework of Reference for Languages) scales. CEFR English levels are used by all modern English language books and English language schools. We recommend that you use CEFR levels in job resumes (curriculum vitae, CV, Europass CV) and other English levels references. The five General English Fluency levels that we offer in each term are as follows:

**A1: Elementary | A2: Pre-Intermediate | B1: Intermediate | B2: Upper-Intermediate | C1: Advanced**

ATLAS LEVELS		GENERAL ENGLISH	ACADEMIC ENGLISH	BUSINESS ENGLISH		COMMON EUROPEAN FRAMEWORK OF REFERENCE FOR LANGUAGE (CEFR)	
ATLAS LEVEL NUMBER	ATLAS LEVEL NAME	CAMBRIDGE EXAMS	IELTS	TOEIC	CAMBRIDGE BEC		
7	C2 CPE	CPE	9.0	905 - 990	Higher	C2 (Mastery)	Proficient User
6	C1 ADV CAE	CAE	8.5				
			8.0	785 - 900	C1 (Effective Operational Proficiency)		
5	B2+FCE	FCE	7.5	605 - 780	Vantage	B2 (Vantage)	Independent User
			7.0				
4	B2 UP-INT		6.5	405 - 600			
			6.0				
3	B1 INT	PET	5.5	255 - 400	Preliminary	B1 (Threshold)	
			5.0				
2	A2 PRE-INT	KET	4.5	185 - 250			
			4.0				
1	A1 ELEM		3.5	10 - 180			
			3.0				
			2.5			A2 (Waystage)	Basic User
			2.0			A1 (Breakthrough)	
			1.5				
			1.0				

**WE KNOW HOW IMPORTANT THE RIGHT ACCOMMODATION IS WHEN PLANNING YOUR EXPERIENCE ABROAD. THAT'S WHY AT ATLAS WE OFFER A RANGE OF STUDENT ACCOMMODATION OPTIONS TO FIT YOUR NEEDS. WHETHER IT'S HOMESTAY OR RESIDENCE, SINGLE ROOM OR SHARING, SELF-CATERING OR FULL-BOARD, WE'VE GOT YOU COVERED!**

#### **ACCOMMODATION AT ATLAS**

- Full-time accommodation team to assist you at all times
- Friendly, welcoming and experienced homestay families
- Single and twin room Atlas residences
- Modern, clean and spacious apartments with single, twin and ensuite options



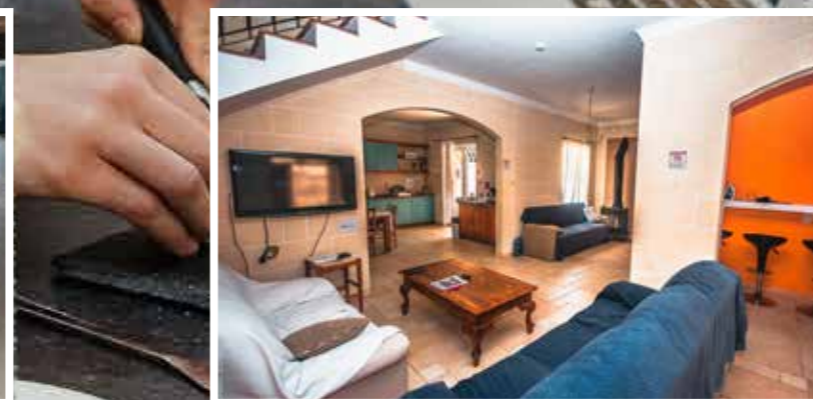
**MAKING YOURSELF  
AT HOME**



ATLAS DUBLIN HOMESTAY



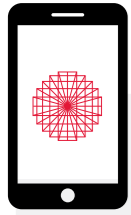
ATLAS DUBLIN RESIDENCE



ATLAS MALTA APARTMENTS

ATLAS MALTA RESIDENCE

# YOUR SUPPORT TEAM



## DOWNLOAD THE ATLAS APP!

- Get tailored information about your programme directly to your phone
- Receive reminders about social events
- Give feedback on your experience with us

Stay connected with all things Atlas!

We know that settling into life in a new country can sometimes be difficult so whatever advice you need, our door is always open.

Our Admissions team will assist you with any queries you have before you arrive at Atlas. Once you've started your course with us, our Academic Manager and support staff are available to give advice and provide you with feedback on your work and progress. If you have a question about your homestay or residential accommodation our Accommodation Manager and team are available throughout the day. If you need help with any other aspect of settling in or living abroad our Front of House and Welfare team are always on hand to advise.

You can talk to us about any issue, no matter how big or small. Whatever is on your mind, during your time with us we are here to listen and help you to enjoy your stay to the full and achieve your maximum potential.



## YOUR ACADEMIC TEAM

Our teachers are experienced, fully-qualified English speakers who will provide you with regular feedback and individual advice. All teachers also take part in year-round training and professional development to help them achieve their maximum potential.

You will have weekly whole-class tutorials, as well as the opportunity to schedule monthly individual progress tutorials with your class teachers, and senior academic staff are available outside lesson times for additional learning support.

Our academic team are committed to ensuring you progress as quickly and efficiently as possible.

## SOCIAL PROGRAMME

We believe that in order to get the most from your time with us, you should be exposed to English not just in the classroom but in a variety of environments and contexts.

That's why we have a dedicated social programme team who organise activities, tours and visits throughout the year. These activities are a scheduled part of all courses and normally occur after class in the afternoon and evening.

You can find out what's happening each week and month by checking the Atlas App and our Wall Newspaper noticeboard, which we update every week.

## WELFARE & SUPPORT

At Atlas we want to create a safe and healthy environment to promote our students' well-being. We aim to create a positive whole-school ethos, in which your emotional needs and general welfare are just as important as your academic progress. If you have any personal or school-related problems please come and speak to our Welfare Officer or any senior staff member - we're here to help!

## ACCOMMODATION

Our Accommodation team are on hand to provide support and assistance whenever you have a query or concern. If you have a question about any aspect of your homestay, or residential or apartment accommodation please just let us know and we'll help.





# OUTSIDE THE CLASSROOM



OUR SOCIAL PROGRAMME AND STUDENT ENGAGEMENT TEAMS ARE DEDICATED TO MAKING YOUR TIME OUTSIDE THE CLASSROOM AS VIBRANT AND INTERESTING AS POSSIBLE. EACH MONTH WE SPEND A LOT OF TIME DESIGNING AND PLANNING ACTIVITIES, TOURS AND TRIPS SO THAT YOU ARE HAVE AN OPPORTUNITY TO PRACTISE YOUR ENGLISH AND MAKE NEW FRIENDS IN A VARIETY OF ENVIRONMENTS AND CONTEXTS.



---

WHETHER YOU ENJOY SPORTS AND THE OUTDOORS, MUSEUMS AND GALLERIES, MUSIC AND THE ARTS, OR JUST SOCIALISING WITH FRIENDS AT ATLAS THERE IS SOMETHING FOR EVERYONE!

CONNECT WITH US ON



**ATLAS DUBLIN  
IS LOCATED IN  
PORTOBELLO HOUSE, A  
BEAUTIFUL LANDMARK  
BUILDING IN THE CITY  
THAT OVERLOOKS THE  
GRAND CANAL.**

---

### **WHY CHOOSE THIS SCHOOL?**

- Centrally located landmark building overlooking the Grand Canal
- Wonderful student facilities including student lounge, cafe, and large library
- Great nationality mix

### **COURSES AVAILABLE**

- General English Fluency (GE20)
- General English Fluency Plus (GE26)
- General English Intensive (GE26/32INT)
- Full-time Cambridge Exam Preparation (FCE20 / CAE20)
- Full-time IELTS Preparation (IELTS20)
- Academic Year (AY20)
- University Pre-Foundation Pathway

### **ACCOMMODATION OPTIONS**

- Homestay Single / Twin
  - Residential Single / Twin
- 





AT A GLANCE



Classrooms:  
**25**



Average Age:  
**27**



Max Class Size:  
**15**

FACILITIES



Library



Computer Room



Student Cafe



Student Lounge

**ATLAS MALTA IS  
LOCATED IN PEMBROKE  
ON THE OUTSKIRTS OF ST  
JULIAN'S, A PICTURESQUE  
SEASIDE TOWN ON  
THE EAST COAST OF  
MALTA WITH STUNNING  
VIEWS ONTO THE  
MEDITERRANEAN SEA.**

### **WHY CHOOSE THIS SCHOOL?**

- Modern, purpose-built school with large light-filled classrooms
- Excellent location walking distance from St Julians
- Residential accommodation options 5-10 minutes walk from the school
- 300 days of sun a year!

### **COURSES AVAILABLE**

- General English Fluency (GE20)
- General English Fluency Plus (GE26)
- Fluency Plus IELTS (GE26IELTS)
- Fluency Plus FCE (GE26FCE)
- General English Intensive (GE26/32INT)
- Academic Year (AY20)

### **ACCOMMODATION OPTIONS**

- Homestay Single / Twin
- Residential Single / Twin
- Apartment Single / Twin





## AT A GLANCE



Classrooms:

10



Average Age:

26



Max Class Size:

15

## FACILITIES



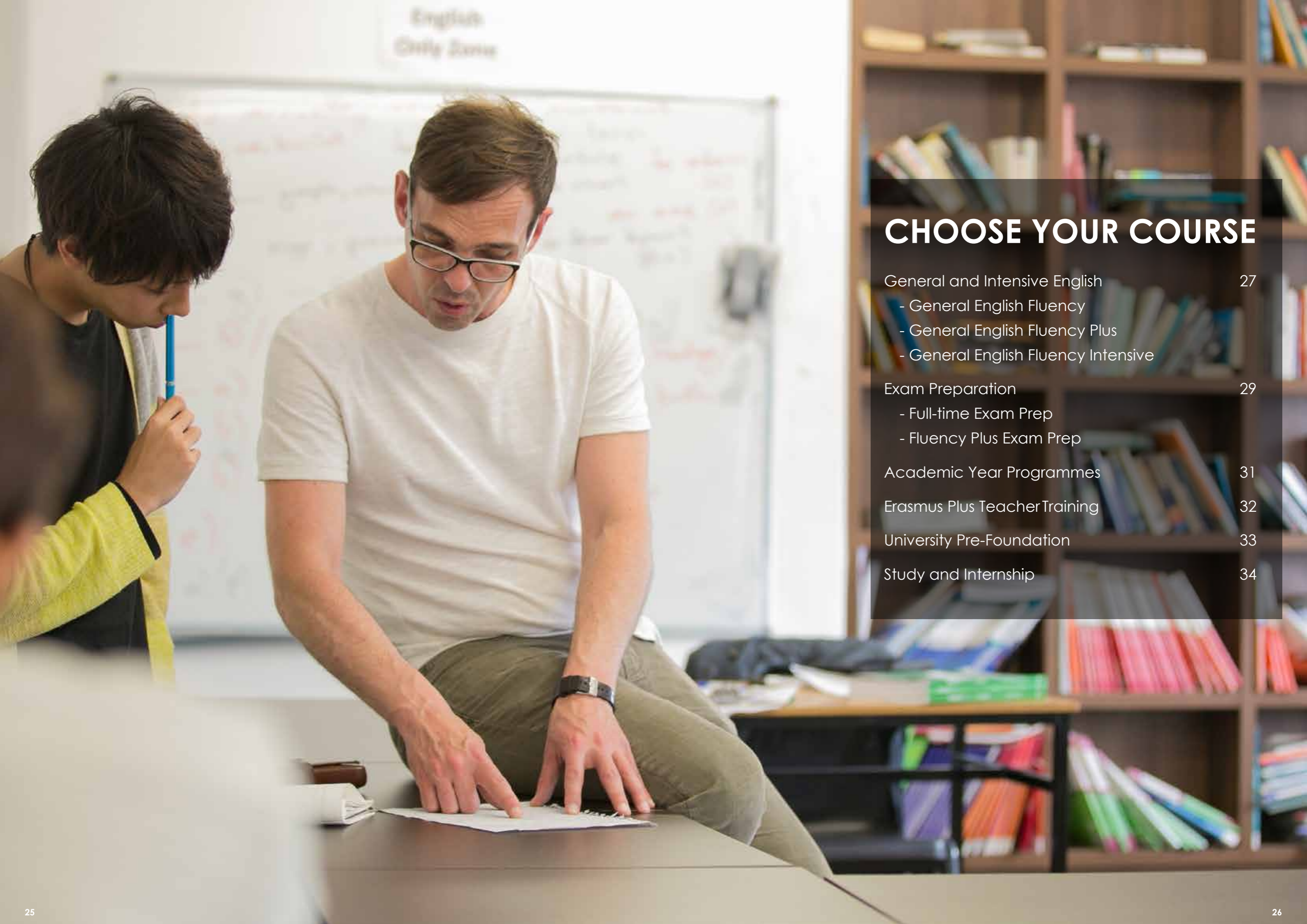
Library



Computer Room



Student Cafe



English  
Only Zone

## CHOOSE YOUR COURSE

General and Intensive English	27
- General English Fluency	
- General English Fluency Plus	
- General English Fluency Intensive	
Exam Preparation	29
- Full-time Exam Prep	
- Fluency Plus Exam Prep	
Academic Year Programmes	31
Erasmus Plus Teacher Training	32
University Pre-Foundation	33
Study and Internship	34

# GENERAL & INTENSIVE ENGLISH



## INCLUDED FREE AS PART OF YOUR COURSE:

- Access to the atlas app
- Access to additional elective lessons
- Access to Study Club
- Regular tutorials for long-term (6 weeks +) students
- End of Course Certificate detailing your English level

## WHAT CAN I EXPECT ?

- Highly trained, experienced and dedicated teachers
- Exposure to a variety of accents and teaching styles
- Communicative, task-based activities
- Weekly progress tests
- Regular feedback from your teachers

### GENERAL ENGLISH FLUENCY

- **20 lessons of group tuition / week**
- **+ up to 6 free elective lessons (optional)**
- **Levels: Elementary – Advanced**
- **Available: Dublin / Malta**

Our most popular General English course consists of 20 lessons of General English Fluency group classes per week. The classes focus on improving your accuracy, fluency and confidence in English. With a focus on real-life grammar, vocabulary and pronunciation you will be better able to communicate successfully with people from all over the world.

### GENERAL ENGLISH FLUENCY PLUS

- **26 lessons of group tuition / week**
- **+ up to 6 free elective lessons (optional)**
- **Levels: Elementary – Advanced**
- **Available: Dublin / Malta**

Our Plus courses combine 20 lessons of General English in the mornings with 6 extra lessons in the afternoons. These afternoon classes are in smaller groups with a maximum of 10 students per class. This allows the teacher to give more attention to each student and focus on the specific areas of English that are of interest to the class.

### GENERAL ENGLISH FLUENCY INTENSIVE

- **20 lessons of group tuition / week**
- **+ up to 6 free elective lessons (optional)**
- **Levels: Elementary – Advanced**
- **Available: Dublin / Malta**
- **Option of two intensive programmes:**
  - **GEINT26: General English + 6 individual lessons**
  - **GEINT32: General English + 12 individual lessons**

This course combines 20 lessons of General English classes with additional individual lessons in the afternoons. The morning sessions give you the opportunity to learn in a group setting and practise your skills with other learners. The afternoon sessions allow you to focus in on individual strengths and areas for improvement with your teacher. Before beginning this course, you will complete a needs analysis and interview with a senior member of our academic team so that we can design an individualised programme that meets your needs and requirements.



# EXAM PREPARATION



- FEATURES OF OUR EXAM PROGRAMMES**
- Experienced teachers who know the exam
  - Full-time and plus class options
  - Guided after-class extension activities
  - Individual academic tutorials with your teacher and our Learning Support Coordinator
  - Mock exams to help you practise under test conditions

Taking an international English exam such as IELTS, Cambridge First or TOEIC, can be a rewarding way of independently measuring your progress and recognising your achievement. Whether it is for your job, to enter university or simply for your own satisfaction, at Atlas we have a range of exam classes and academic supports to ensure that you achieve the exam grades you want.

Our different exam programmes will help you improve your English language knowledge and skills while also helping you to understand how each exam is marked and how you can best approach each paper and question type.

## FULL-TIME EXAM PREPARATION

- **FCE20 / CAE20 / IELTS20**

These courses consist of 20 lessons of exam preparation each week. They are taught by experienced teachers and, in addition to improving your ability to communicate more fluently and accurately, include a focus on the best techniques to use to help you get the best result in each paper.

## FLUENCY PLUS EXAM PREPARATION

- **GE26FCE / GE26CAE / GE26IELTS / GE26TOEIC**

Our Fluency Plus Exam courses combine 20 lessons of General English in the morning with 6 lessons of exam preparation in the afternoons. These are taught by one of our experienced exam class teachers, which allows them to better manage your individual needs and requirements.



# ACADEMIC YEAR PROGRAMMES

## STUDYING FOR 24 WEEKS OR MORE

Taking an extended period of time to live and study abroad is a life-changing experience and a fantastic way to significantly improve your English. That's why our Academic Year courses are designed with all the additional supports you will need to help you settle into life in a new country and maximise your long-term learning goals.



### WEEK ONE TUTORIAL

In your first week, you will have a meeting to make sure that you're satisfied with all aspects of your course.

### WEEKLY OBJECTIVES

Class objectives are set each week in consultation with your teacher.

### REGULAR TESTING

Regular progress tests to monitor your strengths and weaknesses, and help personalise your learning.

### PROGRESS TUTORIALS

One-to-one tutorials with your teacher every 4-6 weeks to help guide your learning.

### ADDITIONAL LEARNING SUPPORT

Catch up on work at our free Study Club sessions or for even more support book an appointment with our Learning Coordinator!

### GET QUALIFIED!

We support the following exams:

- Trinity
- IELTS
- TOEIC
- Cambridge

### THINKING OF UNIVERSITY?

Talk to us about our Pre-Foundation Year Programmes and for advice on going to University in Ireland or the UK.

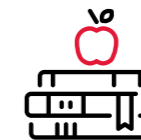
# ERASMUS PLUS TEACHER TRAINING

At Atlas we offer a range of Teacher Training Courses which are eligible for Erasmus+ funding under Key Action 1 (KA1). All our courses are designed for practising primary and secondary teachers who wish to improve their skills, enhance their employability and gain cultural knowledge and awareness.



### TECHNOLOGY IN THE CLASSROOM

The input sessions are a blend of theory and practice in ELT using presentation and demonstration and practical activities using mobile and other classroom technology, and mobile and web applications. As far as possible participants will get to use all of the devices and applications to which they are introduced and will learn to adapt some ready-made programmes to their particular classroom requirements.



### LIFE LANGUAGE & LITERATURE

A popular course for practising teachers who wish to update their knowledge of contemporary English and increase their appreciation of different methodologies and teaching techniques that can be used to bring culture and literature into the ELT classroom. We also examine the impact of recent developments in ELT on the teaching of literature and cross-cultural awareness.



### CLIL (CONTENT & LANGUAGE INTEGRATED LEARNING)

This course is a blend of theory and practice based on the CLIL methodology. We will use a mix of presentation and demonstration of practical teaching activities with both inhouse developed and exploited materials. As the course progresses, participants will be encouraged to reflect on their own CLIL practises and how they can integrate the new or refreshed techniques and ideas into their classes.

For start dates and more information about these courses please see our website or contact us to request a brochure.



# UNIVERSITY PRE-FOUNDATION

Would you like to study in an Irish or UK university? If so then talk to us about our pre-sessional university English programmes that offer a direct enrolment onto the NCUK International Foundation Year at DIFC. This in turn provides you with guaranteed progression\* to one of more than 40 partner universities around the world.

Our pre-sessional pathway programme consists of 20 lessons of IELTS training in the morning plus additional afternoon academic input sessions each month. The programme is designed to get you to a minimum score of IELTS 5.0 and ensure that you are fully prepared to start your university journey.

For more information on our please contact our admissions team or your local sales manager.

Starting IELTS Score	Course Start Date	Course Duration
3.5	January	9 Months
4.0	March/April	6 Months
4.5	June/July	3 Months

\* subject to achieving required IELTS scores and passes in Foundation examinations

## PARTNER UNIVERSITIES INCLUDE:

- The University of Manchester
- The University of Sheffield
- The University of Leeds
- Liverpool John Moore's university
- University of Birmingham
- Queen Mary, University of London
- University of Bristol
- Maynooth University
- National College of Ireland (NCI)
- Queen's University, Belfast
- The University of Western Australia
- The University of Newcastle, Australia
- St Georges, University of London
- RCSI Dublin, Penang and Bahrain
- And many more!

# STUDY AND INTERNSHIP

Our Study & Internship Programmes are a great way to combine learning English with a quality work placement related to your studies. After completing your language studies (4 weeks or more) we match your interests, experience and language ability with one of the many local companies we have links with.

## CANDIDATES MUST:

- Hold a European passport or have a Working Holiday visa
- Be at least 18 years old at the start of the programme
- Have an intermediate level of English (B1) or higher
- Book an English language course with Atlas for at least 4 weeks

## PROGRAMME INCLUDES:

- Induction with work placement manager
- Support and mentoring
- Certificate of Completion
- Access to Atlas' social programme

## INTERNSHIPS ARE AVAILABLE FROM 4 WEEKS IN A RANGE OF SECTORS INCLUDING:

- |                          |  |                            |
|--------------------------|--|----------------------------|
| • Accounting and Finance | • Food & Beverage                      | • Tourism                  |
| • Import/Export          | • Landscaping                          | • Non Profit Organisations |
| • Information Technology | • Fashion/Design                       | • Transportation           |
| • Hospitality            | • Law (6+ weeks. Not in July & August) | • Publishing               |
| • Human Resources        | • Childcare                            | • Administration           |
| • Healthcare             | • Media                                | • Retail                   |
| • Journalism             |  | • Sales & Marketing        |

**ATLAS JUNIOR PROGRAMMES PROVIDE A WONDERFUL OPPORTUNITY FOR YOUNGER LEARNERS TO QUICKLY IMPROVE THEIR ENGLISH WHILE GAINING THE INVALUABLE EXPERIENCE OF LIVING ABROAD AND EXPERIENCING A NEW CULTURE.**

#### **FEATURES OF ALL ATLAS JUNIOR COURSES:**

- Dedicated Safeguarding and Welfare
- Academic content designed with young people's interests in mind
- Integrated Social Programme, with relevant cultural, historical, sporting and artistic activities
- Fully trained and experienced academic, social and administrative staff, supporting and supervising students throughout their programme





## ATLAS JUNIOR SUMMER CAMPS

- Locations in Ireland and the UK
- Residential and Homestay options
- A wide range of programmes including: General English, Intensive, Exam Preparation, Work Experience and 4-1
- Excellent nationality mix

## ATLAS JUNIOR MINI-STAY / GROUP PROGRAMMES

- Available year-round in Ireland and Malta
- Sustainability, Tourism, and Business programmes
- Integrated class and extra-curricular activities



**WITH A WORLD CLASS EDUCATION SYSTEM AND A SAFE AND WELCOMING ENVIRONMENT, IRELAND IS THE PERFECT DESTINATION TO EXPERIENCE SCHOOL LIFE IN A WESTERN COUNTRY. CONTACT US TO LEARN MORE AND BEGIN YOUR EDUCATIONAL ADVENTURE ABROAD!**

---

**WHY ATLAS HIGH SCHOOL?**

- A complete application, accommodation and guardianship service
  - Carefully selected partner schools that are among the best in the country
  - Detailed needs analysis of each student's requirements before arrival
  - Individual orientation programme on arrival and ongoing, consistent support throughout the year
  - Regular coaching sessions and pastoral service with students
- 



# PLACCEMENT HIGH SCHOOL



## HIGH SCHOOL IN IRELAND

- Internationally recognised education system
- Wide variety of school and accommodation types
- Low numbers of international students
- Irish high school qualifications are accepted for undergraduate entry to Irish, UK, European and US universities

To learn more about the application process or to request our High School brochure please contact your local sales agent or email: [highschools@atlaslanguageschool.com](mailto:highschools@atlaslanguageschool.com)



# TESTIMONIALS



Atlas Language School is the best place to improve your English. The teachers are very good and helpful and also show you real friendship. Everyone should have this experience!

**ZEYNEP AKDEMIR, TURKEY - ADULT GENERAL ENGLISH STUDENT**

It's the first time I have travelled to Ireland and taken part in the Atlas Junior Programme. It's so much fun and I'm looking forward to coming back as soon as possible. I love the English classes, trips to Dublin and all the other activities, because you make contact with a lot of people from different countries and cultures, and have so much fun. You don't even realise that you are improving your English skills!



**LISA MARIE VOGELGESANG, GERMANY - JUNIOR PROGRAMME STUDENT!**

Each year we send students to countries and cities all around the world. I can honestly say that Atlas are one of the very best schools we have ever worked with. The staff are incredibly professional and a pleasure to deal with while the academic programme, standard of accommodation and level of service is of the very highest quality. We have sent students to Atlas for over 10 years and during that time they have become one of our biggest partners - I really can't recommend them enough!



**OSCAR PORRAS, OWNER OF MIDLETON AGENCY, SPAIN!**

I've never been to Atlas before but I have made a lot of friends here, I really like this school! I will be back again next year! It's the best!

**EGOR DOROSHEV, RUSSIA - JUNIOR PROGRAMME STUDENT**



The classes are based on different activities which encourage students to talk. The teachers are kind and willing to help, even the weakest students - nobody's left out. Can't wait to go back to Atlas next summer with a group (some of the students who have come this year want to come again next year, so it's a good sign and the best publicity you can get!) I would highly recommend Atlas for junior students who want to improve their English having fun!



**SYLVIE BOGAS, ENGLISH TEACHER AND MANAGER OF EASY ENGLISH, FRANCE**



I'm really happy I chose Ireland to study English because here in Ireland I've found everything - a quiet city, friendly people, beautiful landscape and more!

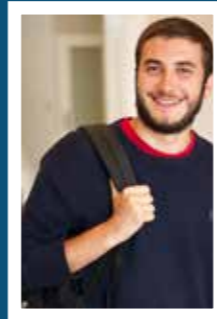
**RASHAD AHMEDI, LIBYA - ADULT IELTS EXAM PREPARATION STUDENT**

Atlas is an amazing school with great teachers that will help you achieve fluency while having fun through well-prepared classes and carefully planned activities. Its location is also a plus, since Atlas faces the canal, giving students a heart-warming sight every morning. It's impossible not to start your day in a good mood!

**LARISSA RAVÁLIA, BRAZIL - ADULT ACADEMIC YEAR STUDENT**

I've studied in Atlas three different times and felt that it was a very positive experience because the teachers make the lessons very interesting and I've met a lot of great people while studying here. I think that I will come back again and again... let's go to Atlas!

**LORENZO RAYBAUDI MASSILIA, ITALY - ADULT GENERAL ENGLISH STUDENT**

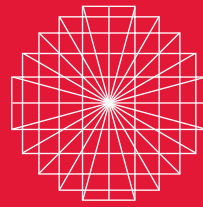


4.6 Star Rating on 

4.8 Star Rating on 







**ATLAS**  
LANGUAGE  
SCHOOL

Portobello House  
Portobello  
Dublin 2, Ireland

Tel: + 353 (0)1 478 2845  
Skype: atlas.reception

[info@atlaslanguageschool.com](mailto:info@atlaslanguageschool.com)  
[www.atlaslanguageschool.com](http://www.atlaslanguageschool.com)

Find us on:

